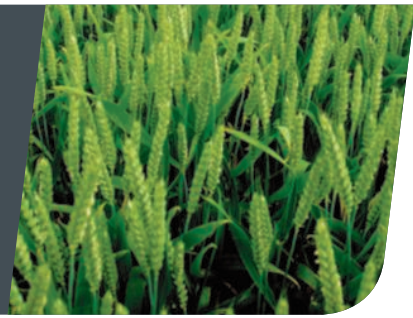


MLT 840 / MLT 1040



AGRICULTURAL HANDLING solutions



A COMMITMENT TO FARMING



As partners to the farming industry for more than 20 years, we know your business is **demanding**, and on today's modern farm the materials handling plays an important part in the daily farm handling jobs, so you can be sure you'll be able to find within our farming range **THE MANITOU** you need.

The MLT840 and MLT1040 telehandlers are the ideal choice for **performance**. Their impressive capabilities enable you to carry out all your **farm handling** tasks: animal feed, harvesting work, bulk loading and unloading, straw and hay handling.

and unloading, straw and hay handling.

Arable, dairy and livestock farmers, cereal growers, cooperatives and agricultural contractors will appreciate the qualities of these machines. More than just a handling solution, MANITOU offers you a product which both looks good and is comfortable to use: inside and outside have been cleverly designed to satisfy you. These machines benefit from innovations conceived by our engineers and designers: JSM^{®*}, digital dashboard display and ECS^{**}, etc. You get greater **comfort** and **productivity**.

When you choose MANITOU, you can count on a fork lift truck for long term durability. You also benefit from the package of services provided by your dealer: after-sales service, servicing and maintenance contracts, on-site repairs and financing solutions.

Why all this? Because, like you, we take pleasure in a **job well done!**



* Joystick Switch and Move, patent applied for by MANITOU BF
** Easy Connect System: hydraulic decompression of the accessory line

A red tractor is positioned in a large, well-lit dairy barn. It is pulling a long, dark-colored hay rack filled with yellow hay. The hay rack has a red metal frame with several vertical dividers. Several black and white cows are lined up in a metal stall, eating hay from the rack. The barn has a high ceiling with metal beams and large windows on the right side. The floor is concrete and covered with some hay. A person is visible in the driver's seat of the tractor.

**A real agricultural
handling **solution****

PERFORMANCE ON YOUR FARM

4000 kg:

The MLT 840 and 1040 's maximum capacity allows you to move up to 4 tonnes and - better still - to tip up to 3 tonnes into a 4.5 m high trailer.

Up to 9.60 m:

The boom when fully extended is capable of lifting loads up to:

- 7.55 m (MLT 840)
- 9.60 m (MLT 1040)

3.74 m:

A turning radius that makes no compromise: performance means agility!





You choose

	Motors (HP)	Transmission	Gearbox	Pump type	Flow/pressure (l/min-bar)
MLT 840-115 PS	115	Torque convertor	M-Shift® with Lock-up	Variable flow	150
MLT 840-137 PS	137	Torque convertor	M-Shift® with Lock-up	Variable flow	180
MLT 1040-137 PS	137	Torque convertor	M-Shift® with Lock-up	Variable flow	180

The MLT 840 and 1040 have the new M-Shift® gearbox equipped with 5 speeds giving you smooth gear-shifts in all situations.

Goes anywhere

Agricultural profile tyres, high ground clearance, an impressive tractive effort and a regulated cooling system: you will be able to work efficiently in any situation. The MLT 840 and 1040 have been developed to help you manage your farm operations.



COMFORTABLE WORKING ENVIRONMENT



A new standard in agricultural telehandlers.

As we know you will be spending a lot of your time in your MANITOU cab, we wanted you to enjoy optimum **comfort and technology**.

The interior of the MLT cab leaves nothing to be desired with its excellent styling. The refined dashboard utilising the latest modern technology and the intuitive data available to the driver, all contribute to the **top of the range feel of the cab**.

The operator benefits from the latest ergonomic design for maximum driver comfort. The cab layout has been carefully planned to provide a **generous amount of space** and equipment perfectly suited to your needs are available as standard or on option: cloth seat, fully adjustable steering column (height/depth), sun visor, roof screen, electric window, air conditioning, automatic wheel alignment, all help to provide you with a comfortable working environment.

Exclusive to MANITOU, **JSM®** lets you control all movements with one hand safely and intuitively: raising and lowering the boom, extending and retracting, crowding and tilting, control over the hydraulic line to the attachment, forward/reverse direction of travel or switching the **M-Shift® gearbox** to manual. You always keep one hand on the steering wheel to maintain full control of your MLT.

The new dashboard features a digital information screen displaying the next maintenance period, the gear engaged, travel speed, boom angle, fuel consumption and lots of other information useful to your day-to-day work.





**Designed
to increase
comfort!**

**Adapting
to your requirements**






EACH TO THEIR OWN **STYLE**

Reacting to customer choice is a MANITOU principle. That's the reason you **can choose between** 3 levels of finish: **Classic, Premium** and **Elite**.

Because all your requirements are important, MANITOU provides you with complete peace of mind in all versions of the MLT.



Standard and optional equipment

	 CLASSIC	 PREMIUM	 ELITE
Fork carriage	●	●	●
Rear view mirror	●	●	●
Radiator auto cleaning system	●	●	●
Radio player	●	–	–
CD/MP3 radio	○	●	–
Bluetooth radio	○	○	●
Mechanical cloth seat	●	–	–
Pneumatic cloth seat	○	●	–
Low-frequency pneumatic cloth seat	○	○	●
Air conditioning	○	●	●
Attachment line decompression system: ECS	○	●	●
Manual accelerator	○	●	●
Boom suspension	○	○	●
LED worklight	○	○	●
Semi-automatic wheel realignment	○	○	●
Adjustable, continuous hydraulic accessories line	○	○	●
Hydraulic locking (accessories)	○	○	○
Internal rear view mirror	○	○	○
Boom lighting	○	○	○

● Standard ○ Option – Not available

COMBINE POWER AND PERFORMANCE

DESIGNED TO OPTIMISE POWER AND FUEL EFFICIENCY

Each telehandler must have a **suitable power unit** to give you the best engine/machine torque: too little power and you lose efficiency, too much power could increase consumption to no effect.

To transform minimum fuel into maximum efficiency, your MLT 840 and 1040 are fitted with a **John Deere 4.5 I** four-cylinder engine complying with Interim Tier 4/Stage IIIB standards and developing **115 HP** (MLT840 only) **or 137 HP**. These engines are equipped with an Exhaust Gas Recirculation (EGR) valve combined with a Diesel Particulate Filter (DPF).

The cooling system has been designed to offer **efficiency** and **economy**. Featuring an **electronic regulating device**, the cooling system controls the fan speed automatically according to engine temperature, leading to significant fuel savings. Equipped as standard with an **automatic air flow inverter**, your telehandler can "breathe" perfectly in all situations to provide excellent working conditions regardless of engine speed.



Optimising the power of your engine



M-SHIFT® GEARBOX: SIMPLICITY AND EFFICIENCY

The new five-speed **M-Shift® gearbox** is designed for smooth gear changing in all situations. Two modes of operation are available: **automatic and manual**.

In automatic mode:

You shift from one gear to another with minimum torque interruption. The gearshift program adapts to the torque and speed demanded by the job at hand, and **determines the optimum gear automatically**. This lets you engage a low gear, for example, when you are towing a trailer on hilly roads to recover torque and speed.

You choose the top gear in which you wish to travel: **D, 4, 3** or **2**. In **D**, your machine will derive the full benefit of the five gears available to offer you optimum performance.

M-SHIFT® gearbox command unit

- 1 Gear selector
- 2 Hydraulic line A control
- 3 Hydraulic line B control



When handling silage or bulk handling grain, you may decide to go no higher than third gear. In this case, you select 3 and your MLT 840 or 1040 will take care of the gear changes, quickly and smoothly, but will never engage a gear higher than third.

In manual mode:

You decide which gear you wish to engage using the \oplus and \ominus buttons on the JSM®.

Lock-up :

The MLT 840 and MLT1040 are fitted as standard with a torque converter lock-up function which drives the transmission system directly over **23 kph in fourth gear** and **38 kph in fifth**. This system **improves the efficiency** of your machine, increases its tractive effort and reduces fuel consumption.

115* or 137 HP:

The 115 and 137 available horsepower offers efficient moderate fuel consumption on an everyday basis for maximum performance. *MLT 840 only.

Five-speed Powershift:

Designed for performance and economy, the new M-Shift® automatic gearbox fitted as standard on the MLT 840 and 1040 also offers you flexibility and comfort.

Work **quickly**
and **effectively**



YOUR PARTNER IN PRODUCTIVITY

Save yourself time to concentrate on what matters - that's MANITOU's philosophy when it comes to handling: fast working cycles and driver comfort are good examples.

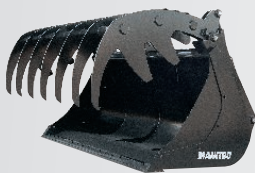
For maximum efficiency, MANITOU offers you a machine which is simple to use. **Quick and easy to learn** (JSM®, controls perfectly placed), your MLT840 and 1040 are the solution to all your farm handling duties.

Manœuvrability is essential! You will be able to do even more work: the more time you spend at the wheel of your MANITOU the more your efficiency will be increased.

With the **LSU** (Load Sensing Ultra) system using variable-displacement pumps up to **180 l/min**, movements can be cumulated for improved working efficiency. You can modulate the hydraulic speed of your boom head attachment in both directions by means of two flow regulators. Once you have set up the system to suit, you can for example **open** a bale clamp **quickly** and **close** it **slowly**, without even thinking about it! Very practical when handling bales of haylage!

Your productivity and safety depends on **attachments** that are tailored to your handler's **specifications**. When developing our machines we qualify the attachment that will be able to give you optimal performance and that comply with the norms in force. Choose a MANITOU approved accessory, the best choice for your MLT!

Some accessories:



Multifunction grab bucket



Bale clamp



Collector brush



Large volume manure fork



Silo unloader bucket

150* or 180 l/min:

The piston pump of your MLT 840, combined with the JSM®, delivers a maximum flow rate of 150 or 180 l/min for quick and accurate movements.

*MLT 840 only.

4 x 4 x 4:

4 wheel drive and 4 wheel steer = manœuvrability for getting out of all situations.



A REAL KNOW-HOW

Our **design department**, employing more than 200 engineers and technicians, have specialised in the design of agricultural telehandlers **for more than 20 years**. With more than 50 registered patents, our knowledge and expertise with regard to the structure of the machine offers you reliability and durability. A fully comprehensive testing procedure and "best practice" methods are applied to ensure quality manufacturing at all levels, utilising all the latest modern technology.

Specialists in agriculture, MANITOU develop their product range with the customer in mind, selecting components to suit the most arduous farm handling needs, **your machine like the MANITOU company is 100% dedicated to agriculture**: the tyres, transmission and even the cooling system have been logically chosen and assembled.



**The assurance
of working
in total safety**



A machine **100%** dedicated
to **agricultural** use



YOU ARE PROTECTED

Your working environment must above all be a safe area.

The excellent **stability** of the MLT 840 and 1040 combined with the aggravating movement arrestor allows you to handle maximum loads up to **4 tonnes** with complete confidence.

Your **safety** is further reinforced by the **presence detector** located in the seat. Travel movements are only allowed when you are sitting in the driving seat.

The cab has been especially designed to **protect** you. Satisfying **ROPS/FOPS*** requirements, withstanding rolling over, heavy objects falling and therefore prevents distortion to the cab.

A large window area, **laterally mounted engine**, low boom pivot as well as the high seating position gives you **360° visibility** guaranteeing both your own safety and that of everyone around you.

* ROPS: rollover protection structure
FOPS: falling objects protection structure

MANITOU SERVICES



MANITOU
FINANCE

Tailor-made finance to make the best use of your funds

You can plan the purchase of your forklift with peace of mind by using MANITOU* financing opportunities.

You will have simple solutions adapted to your needs and seasonal requirements. If you want to make a rapid investment, consider asking us for a personalised proposal to take your situation into account.

* MANITOU Finance solutions are available in certain countries.

MANITOU maintenance contract

2 levels of maintenance adapted to your needs.

You are sure of:

- equipment always in good working condition
- a reduction of repair costs as a result of regular servicing
- authentic standardised services

- Labour
- Attendance costs



- Labour
- Attendance costs
- Parts and lubricants



Extension of guarantee



With **MANIPLUS**, you can take out an extension of guarantee up to 48 months.

EASY MANAGER

A simple and flexible system for fleet management (with or without geolocation) to provide optimum service from your machines. **EASY MANAGER** gives you:

- real-time materials management
- simple and easy way of managing your machinery activity and maintenance
- maximise your asset and safeguard your equipment



MANITOU spare parts

Utilising genuine MANITOU spare parts is sure to prolong the best performance capability of your machine. Your MANITOU dealer has access to a stock of 70,000 part numbers, available in 24 hours in Europe (48 hours outside Europe).



TOGETHER, LET'S REDUCE OUR CARBON FOOTPRINT



The material handling sector has not yet got a normalised cycle to measure the trucks' energy consumption. Manitou Group clearly shows its commitment to transparency by establishing an internal protocol, accessible to all, that can reveal its own measures of consumption (l/h) and CO2 emissions (kg/h). To provide the highest reliability, the data is checked and approved by an independent body, UTAC* specialized in the registration of vehicles and equipment.

SUSTAINABLE SOLUTIONS

To be THE material handling reference is to commit to innovate to offer you safe, efficient and sustainable solutions today and tomorrow.

TEST PROTOCOL

Consumption measurements are performed on four representative activities of a telescopic forklift: handling, bulk loading, idle and road work.



TOGETHER

Manitou Group would like to accompany you in reducing your trucks fuel consumption to help cut back your carbon footprint.

APPROVED PROCEDURES

To validate orientations adopted by the Group in terms of fuel consumption, we wanted to validate our procedures via a recognised external body.

INFORM

We have developed information and awareness tools (product labels, iPad simulator...) to inform you about our trucks' fuel consumption and emissions.



Calculate your fuel consumption:
<http://reduce.manitou.com>



*UTAC: Technical Union for the Automobile, Motorcycle and Cycle Industries performs official duty cycles in the automotive sector. UTAC is the only French Technical Service notified to the European Commission and the UNO for fuel consumption.

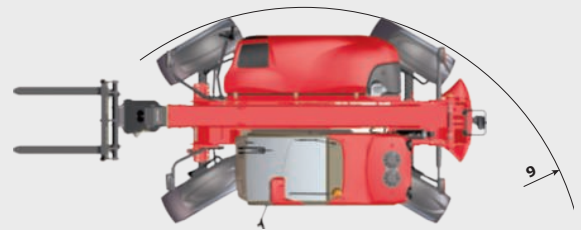
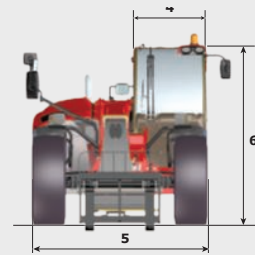
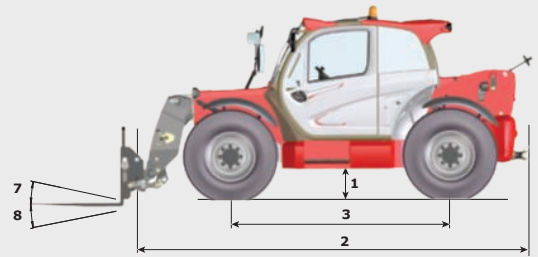
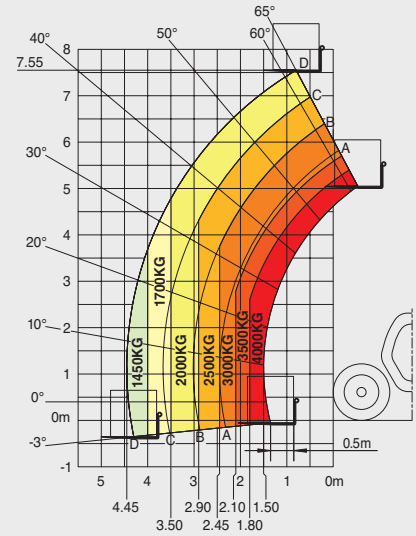
	MLT 840-115 PS	MLT 840-137 PS
--	----------------	----------------

Lifting		
Max. capacity	4000 kg	
Max. lifting height	7.55 m	
Max. outreach	4.45 m	
Reach at max. height	0.90 m	
Break-out force with bucket	5500 daN	
Unladen time		
Lifting	8.70 secs	8.40 secs
Lowering	5.20 secs	4.90 secs
Extension	6.50 secs	6.30 secs
Retraction	5.40 secs	5.20 secs
Crowd	3.20 secs	3.00 secs
Dump	2.50 secs	2.40 secs
Tyres		
	460/70 R 24	
Service Brake		
	hydraulic oil immersed multi-disc braking on front/rear axles	
Engine		
	JOHN DEERE Stage III B	
Type	4045 PWX	
Cubic capacity	4 cylinders/4500 cm ³	
Power	115 HP/86 kW	137 HP/102 kW
Max. torque	480 Nm - 1500 rpm	534 Nm - 1500 rpm
Injection	direct	
Cooling	water	
Laden drawbar pull	9300 daN	
Transmission		
	torque converter	
Gearbox	Powershift M-Shift® - Lock-up	
Reversing shift	electrohydraulic control	
Number of gears (forward/reverse)	5/3	
Max. travel speed (may vary according to applicable regulations)	40 kph	
Hydraulics		
	150 l/min - 290 bar	180 l/min - 290 bar
Pump	swashplate piston pump electronically controlled variable cubic capacity	
Control valve	DDIC	
Capacities		
Hydraulic oil	175 l	
Fuel	143 l	
Unladen weight (with forks)		
	8401 kg	
Dimensions		
1. Ground clearance	0.41 m	
2. Overall length to carriage	5.37 m	
3. Wheelbase	2.88 m	
4. Overall width of cab	0.995 m	
5. Overall width	2.39 m	
6. Overall height	2.40 m	
7. Crowd angle	12°	
8. Dump angle	135°	
9. Turning radius (over tyres)	3.74 m	
Standard forks (length x width x thickness)	1200 x 125 x 50 mm	
Noise and vibration		
Noise at driving position (LpA)	80 dB	
Environmental noise (LwA)	105 dB	
Vibration to whole hand/arm	< 2.5 m/s ²	

Rough terrain load chart

standard EN1459 B

Machine on tyres with forks

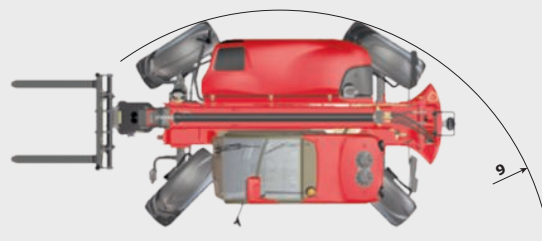
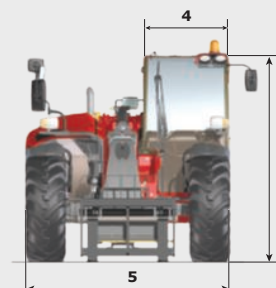
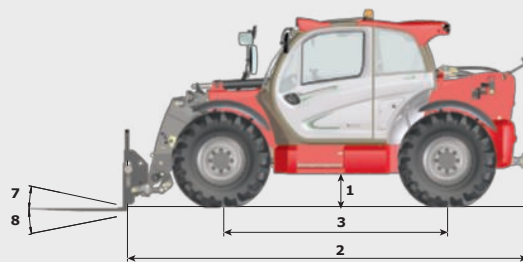
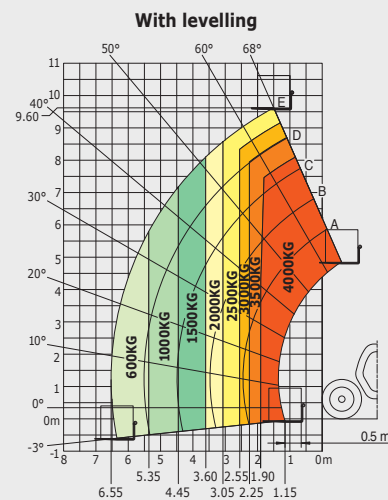


MLT 1040 137 PS

Lifting	
Max. capacity	4000 kg
Max. lifting height	9.6 m
Max. outreach	6.55 m
Reach at max. height	1.5 m
Break-out force with bucket	5500 daN
Unladen time	
Lifting	8.34 secs
Lowering	5.36 secs
Extension	11.3 secs
Retraction	9 secs
Crowd	3.8 secs
Dump	2.6 secs
Tyres	460/70-24
Service Brake	hydraulic oil immersed multi-disc braking on front/rear axles
Engine	JOHN DEERE Stage III B
Type	4045 PWX
Cubic capacity	4 cylinders - 4500 cm ³
Power	137 HP - 102 kW
Max. torque	534 Nm - 1500 rpm
Injection	direct
Cooling	water
Laden drawbar pull	9300 daN
Transmission	torque converter
Gearbox	Powershift M-Shift - Lock-up
Reversing shift	electrohydraulic control
Number of gears (forward/reverse)	5/3
Max. travel speed (may vary according to applicable regulations)	40 kph
Hydraulics	180 l/min - 290 bar
Pump	swashplate piston pump electronically controlled variable cubic capacity
Control valve	DDIC
Capacities	
Hydraulic oil	195 l
Fuel	143 l
Unladen weight (with forks)	9175 kg
Dimensions	
1. Ground clearance	0.41 m
2. Overall length to carriage	5.17 m
3. Wheelbase	2.88 m
4. Overall width of cab	0.995 m
5. Overall width	2.39 m
6. Overall height	2.40 m
7. Crowd angle	12°
8. Dump angle	135°
9. Turning radius (over tyres)	3.74 m
Standard forks (length x width x thickness)	1200 x 125 x 50 mm
Noise and vibration	
Noise at driving position (LpA)	80 dB
Environmental noise (LwA)	105 dB
Vibration to whole hand/arm	<2.5 m/s ²

Rough terrain load chart standard EN1459 B

Machine on tyres with forks



Your nearest **MANITOU** dealer:



Head office:
B.P. 249 - 430 rue de l'Aubinière - 44158 Ancenis Cedex - France
Tel: 00 33 (0)2 40 09 10 11 - Fax: 00 33 (0)2 40 09 10 97
www.manitou.com



facebook.com/manitou.official